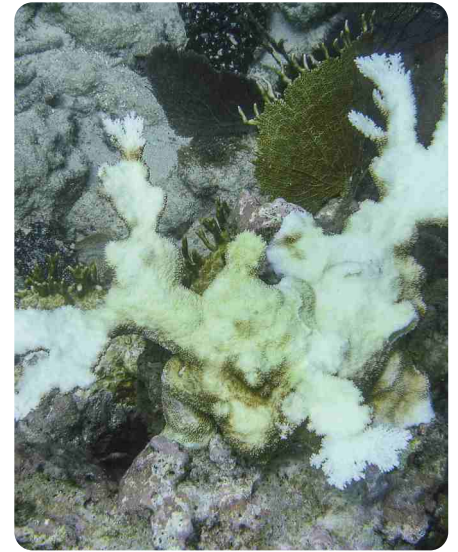


**PA** = Pale – definite loss of pigment or lighter coloration for the species.

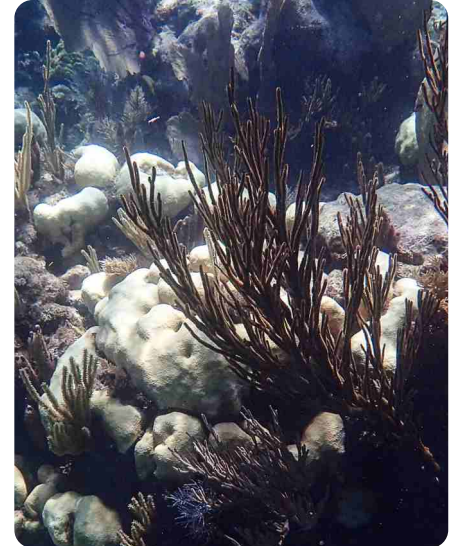
**PB** = Part Bleached – patches of fully bleached or some white tissue on the colony

**WB** = Whole Bleached – over 90% totally white-bleached tissue

Acropora palmata=  
**APAL**



Orbicella annularis=  
**OANN**



Pseudodiploria strigosa=  
**PSTR**





**PA** = Pale – definite loss of pigment or lighter coloration for the species.

**PB** = Part Bleached – patches of fully bleached or some white tissue on the colony

**WB** = Whole Bleached – over 90% totally white-bleached tissue

*Siderastrea siderea*  
= **SSID**



*Porities porities*  
= **PPOR**



*Agaricia tenuifolia*  
= **ATEN**

